

CONTACT INFORMATION

Please reach out with questions/concerns at getintouch@adrich.io or +1 870 600 3038 (if in US)



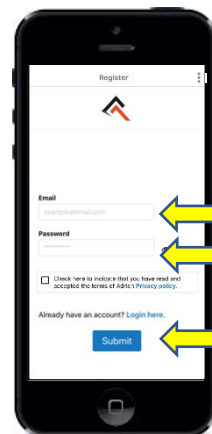
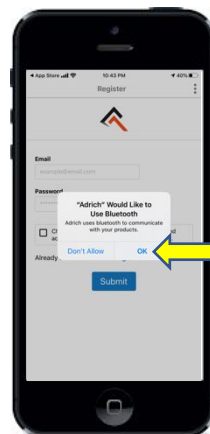
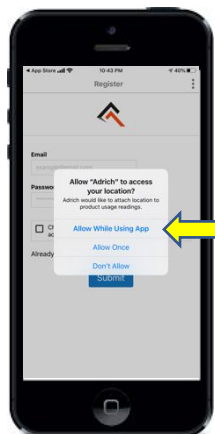
www.adrich.io



BEFORE YOU USE THE PRODUCT!

- ✓ Fill product (see product set up instructions)
- ✓ Please follow the set-up instructions below. **IMPORTANT:** Use the email address and mobile phone number you have on record with the recruiting firm to ensure receipt of communications.)
- ✓ Be sure to download the app before you use the product.
- ✓ Please keep your Bluetooth & Location services **turned on**.
- ✓ Keep your Adrich app running in the background. For iPhone users, please do NOT swipe up and close the app. Google Pixel is not currently supported.
- ✓ When first connecting your product, please allow up to 10 seconds for product to sync. If connection does not establish, please try one more time. If issue persists, contact Adrich support.
- ✓ **Please do NOT tamper with the Smart Product Tracker™ (behind label) on the product!**
- ✓ Do NOT put the product in the dishwasher or the microwave

CONNECTING THE PRODUCT TO THE APP

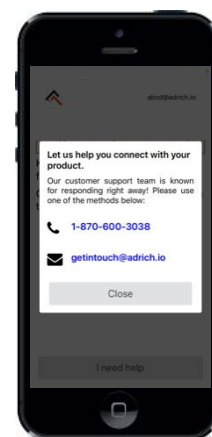
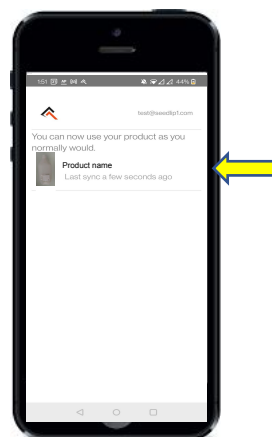
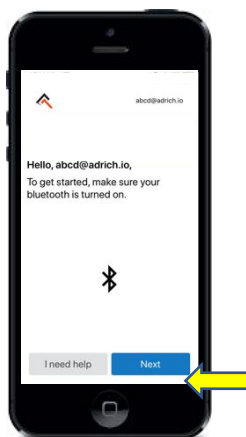


Step 1 Install the “Adrich 2.0” app on your smart phone.
Search “Adrich 2.0” in the Apple store or Google Play store.

Step 2 Grant Adrich access to **location**
iPhone: “Allow While Using App”
Android: Allow in Settings – “Allow All the Time”
Allow Adrich to send **Notifications**

Step 3 Allow Adrich to use Bluetooth.

Step 4 Register your account using your email address and mobile phone number.



Step 5 Turn on your Bluetooth, if not done already.
Click “Next”

Step 6 Keep your phone near. **Press and hold the button (grey dot)** on the label until red light comes on, on the opposite side of the button and an image of product appears on the app. **“You are Connected.”**

Step 7 Fill out your details & you are all set!
If you're using an iPhone, don't close the app
After the initial pairing, no further action required to keep it paired.

Optional
Email or call us at getintouch@adrich.io or +1 870 600 3038 (US only) for any additional questions